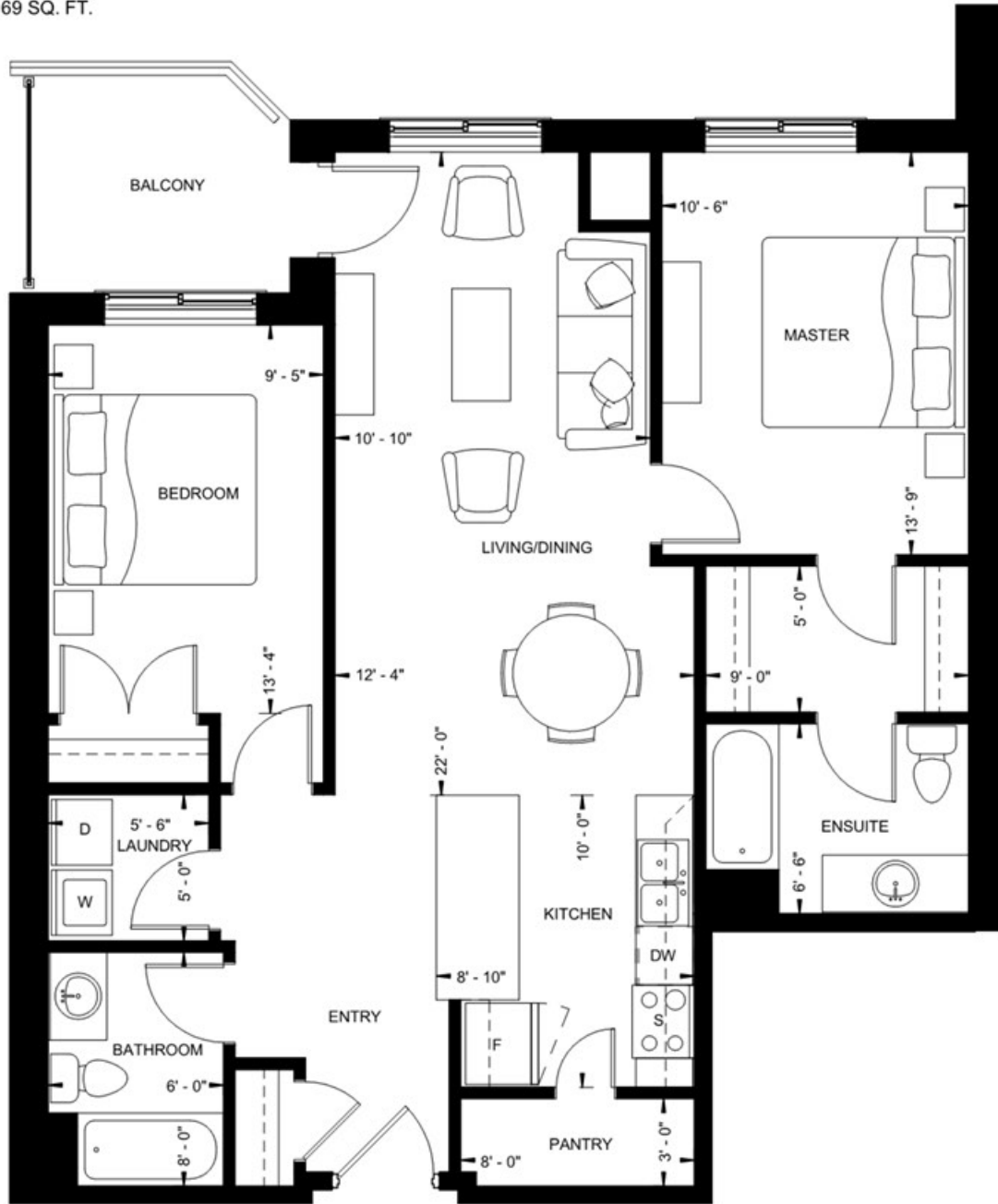


NIAGARA

2 BEDROOM
1060 SQ. FT.

BALCONY 69 SQ. FT.

- MASTER BEDROOM WITH ENSUITE
- BALCONY WITH GLASS
- SPACIOUS PANTRY
- IN-SUITE LAUNDRY WITH HOOK-UPS FOR WASHER AND DRYER



6TH FLOOR



FLOORS 2 - 5



GROUND FLOOR



VICTORIA STATION RESIDENCE

PLEASE NOTE: MEASUREMENTS ARE SUBJECT TO CHANGE AND MAY NOT BE 100% ACCURATE. FLOOR PLAN AREA PROVIDED FOR CONVENIENCE AND ARE TO BE USED AS A GUIDELINE ONLY.